

Flowcharts

Diagnostic Trouble Code (DTC) 1: ABS Pump Motor Over-run (20 seconds)

CAUTION: Use only the digital multimeter to check the system.

Pre-test step:

- Check for fluid leaks from the functional parts and replace the faulty parts if there is a leak.

Functional parts:

- Modulator unit
- ABS pump assembly
- High pressure hose/pipe

— With engine running, ABS indicator light is ON.
— With service check connector jumped (see page 19-51), DTC 1 is indicated.

Bleed high pressure fluid from the maintenance bleeder with the Bleeder T-wrench (see page 19-77).

Remove the ABS pump motor relay from the under-hood fuse/relay box.

Connect the No. 1 and No. 2 terminals using a jumper wire for about eight seconds.

Does the ABS pump motor run with an increasingly loud, raspy sound?

NO

Pump runs with a constant soft sound:
Bleed air from anti-lock brake system using the procedure on page 19-84 and check the pump sound again.

YES

Check the accumulator fluid quantity by bleeding the high pressure line with the Bleeder T-wrench.

Is there 40—70 ml?

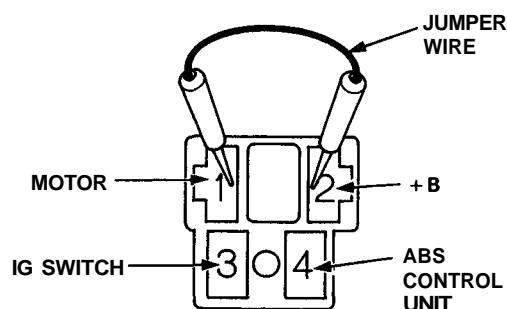
NO

(To page 19-54)

YES

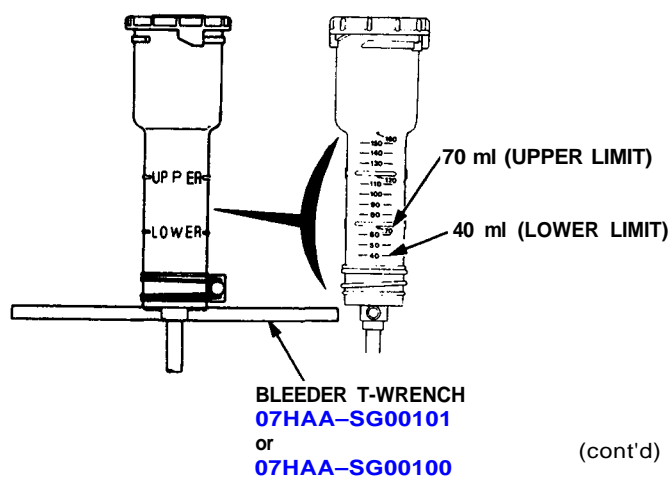
(To page 19-54)

ABS PUMP MOTOR RELAY CONNECTOR



View from terminal side.

NOTE: Use a jumper wire with a bare wire thickness of at least 2 mm.



(cont'd)

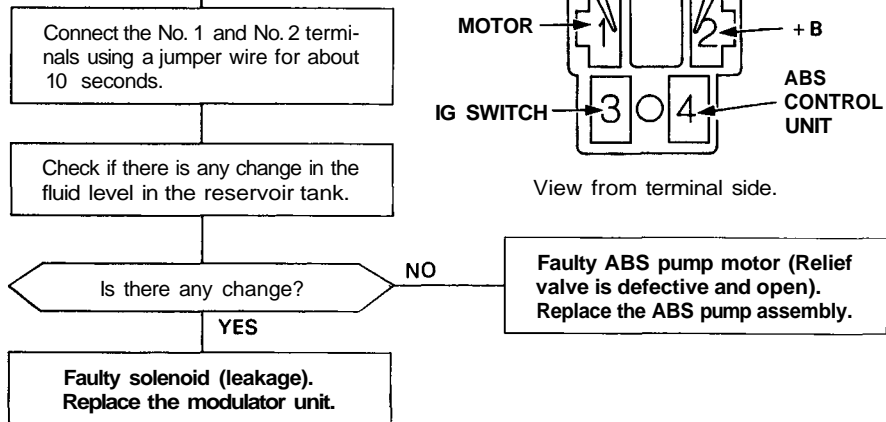
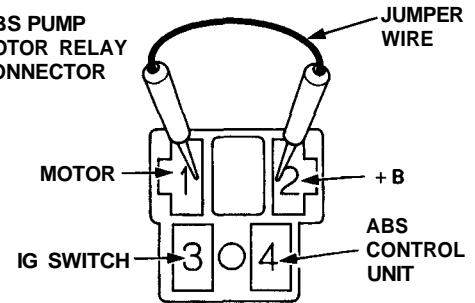
Troubleshooting

Flowcharts (cont'd)

(From page 19-53)

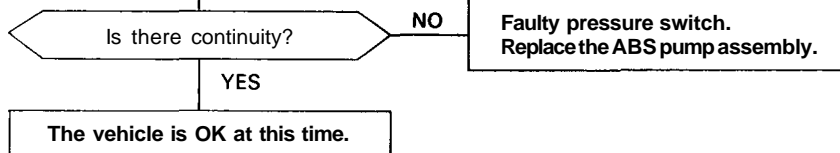
(From page 19-53)

ABS PUMP
MOTOR RELAY
CONNECTOR



Connect the No.1 and No.2 terminals using a jumper wire for about 10 seconds.

Disconnect the pressure switch connector and check the continuity between the No.1 (YEL) and No.2 (YEL) terminals.



PRESSURE SWITCH CONNECTOR

